



**India Meteorological Department
(Ministry of Earth Sciences)**

BULLETIN NO. 4 (BOB/05/2022)

TIME OF ISSUE: 0130 HOURS IST

DATED: 10.08.2022

FROM: INDIA METEOROLOGICAL DEPARTMENT (FAX NO. 24643965/24699216/24623220)

TO: CONTROL ROOM, NDM, MINISTRY OF HOME AFFAIRS (FAX.NO. 23093750)

CONTROL ROOM NDMA (FAX.NO. 26701729)

CABINET SECRETARIAT (FAX.NO.23012284, 23018638)

PS TO HON'BLE MINISTER FOR S & T AND EARTH SCIENCES (FAX NO.23316745)

SECRETARY, MOES (FAX NO. 24629777)

H.Q. (INTEGRATED DEFENCE STAFF AND CDS) (FAX NO. 23005137/23005147)

DIRECTOR GENERAL, DOORDARSHAN (23385843)

DIRECTOR GENERAL, AIR (23421105, 23421219)

PIB MOES (FAX NO. 23389042)

UNI (FAX NO. 23355841)

D.G. NATIONAL DISASTER RESPONSE FORCE (NDRF) (FAX NO. 26105912, 2436 3260)

DIRECTOR, PUNCTUALITY, INDIAN RAILWAYS (FAX NO. 23388503)

CHIEF SECRETARY, ANDAMAN & NICOBAR ISLANDS (FAX NO. 03192- 232656)

CHIEF SECRETARY, GOVT. WEST BENGAL (FAX NO. 033-22144328)

CHIEF SECRETARY, GOVT. OF ODISHA (FAX NO. 0674 -2536660)

CHIEF SECRETARY, GOVT. OF ANDHRA PRADESH (FAX NO. 0863-2441029, 08645-246600)

CHIEF SECRETARY, GOVT. OF TAMIL NADU (FAX NO. 044-25672304)

CHIEF SECRETARY, GOVT. OF PUDUCHERRY (FAX NO. 0413-2337575, 2334145)

CHIEF SECRETARY, GOVT. OF GUJARAT (FAX NO. 079-23250305)

CHIEF SECRETARY, GOVT. OF MAHARASHTRA (FAX NO. 022- 22028594)

CHIEF SECRETARY, GOVT. OF CHHATTISGARH (FAX NO. 771-2221206)

CHIEF SECRETARY, GOVT. OF JHARKHAND (FAX NO. 651-2400255)

CHIEF SECRETARY, GOVT. OF TELANGANA (FAX NO.040-23453700)

CHIEF SECRETARY, GOVT. OF MADHYA PRADESH (FAX NO. 755-2441076)

Sub: Depression over interior Odisha and adjoining Chhattisgarh

The depression over interior Odisha moved west-northwestwards with a speed of about 18 kmph during past 6 hours and lay centered at 2330 hours IST of 9th August, 2022 over interior Odisha and adjoining Chhattisgarh near latitude 21.5°N and longitude 83.3°E, about 70 km west of Sambalpur (Odisha) and 170 km east-northeast of Raipur (Chhattisgarh).

It is likely to move west-northwestwards and weaken gradually into a well-marked low pressure area over Chhattisgarh and neighbourhood during next 12 hours.

Warnings:

(i) Rainfall (warning graphics enclosed)

10th August: Heavy to very heavy rainfall at isolated places is likely over Madhya Pradesh, Madhya Maharashtra, Vidarbha, Chhattisgarh, Odisha and Gujarat region and heavy rainfall at isolated places is likely over Jharkhand, Gangetic West Bengal and East Rajasthan.

11th August: Heavy to very heavy rainfall at isolated places is likely over Madhya Pradesh and Gujarat State; and heavy rainfall at isolated places is likely over East Rajasthan, Madhya Maharashtra, Vidarbha, Chhattisgarh, Jharkhand, Odisha and Gangetic West Bengal.

12th August: Heavy to very heavy rainfall at isolated places is likely over west Madhya Pradesh and **heavy Rainfall at isolated places** is likely over Gujarat state, Rajasthan, Chhattisgarh and Odisha.

13th August: Heavy to very heavy rainfall at isolated places is likely over Odisha and **heavy rainfall at isolated places** is likely over Rajasthan, Madhya Pradesh, Chhattisgarh, Jharkhand, Coastal Andhra Pradesh and Gangetic West Bengal.

(ii) Wind warning:

10th August: Squally wind speed reaching 45-55 kmph gusting to 65 kmph is very likely over northwest Bay of Bengal along & off Odisha & West Bengal coasts, central & adjoining south Bay of Bengal and along & off North Andhra Pradesh, Tamil Nadu, and Comorin area & east Sri Lanka coasts. Squally weather with wind speed reaching 40-50 kmph gusting to 60 kmph is very likely over northeast Bay of Bengal and Andaman Sea.

11th August: Squally wind speed reaching 40-50 kmph gusting to 60 kmph is very likely over north Bay of Bengal along & off Odisha & West Bengal coasts, central & adjoining south Bay of Bengal and along & off south Tamil Nadu coast, Comorin area & southeast Sri Lanka coasts.

12th August: Squally wind speed reaching 40-50 kmph gusting to 60 kmph over central Bay of Bengal and adjoining north Bay of Bengal & parts of south Bay of Bengal.

(iii) Sea condition

Sea condition is likely to be rough to very rough over north Bay of Bengal along & off Odisha & West Bengal coasts, central & adjoining south Bay of Bengal and along & off Andhra Pradesh, Tamil Nadu, and Comorin area & east Sri Lanka coasts and Andaman Sea during 10th to 11th August and **over** central Bay of Bengal & adjoining north Bay of Bengal & parts of south Bay of Bengal on 12th August.

(iv) Fishermen Warning

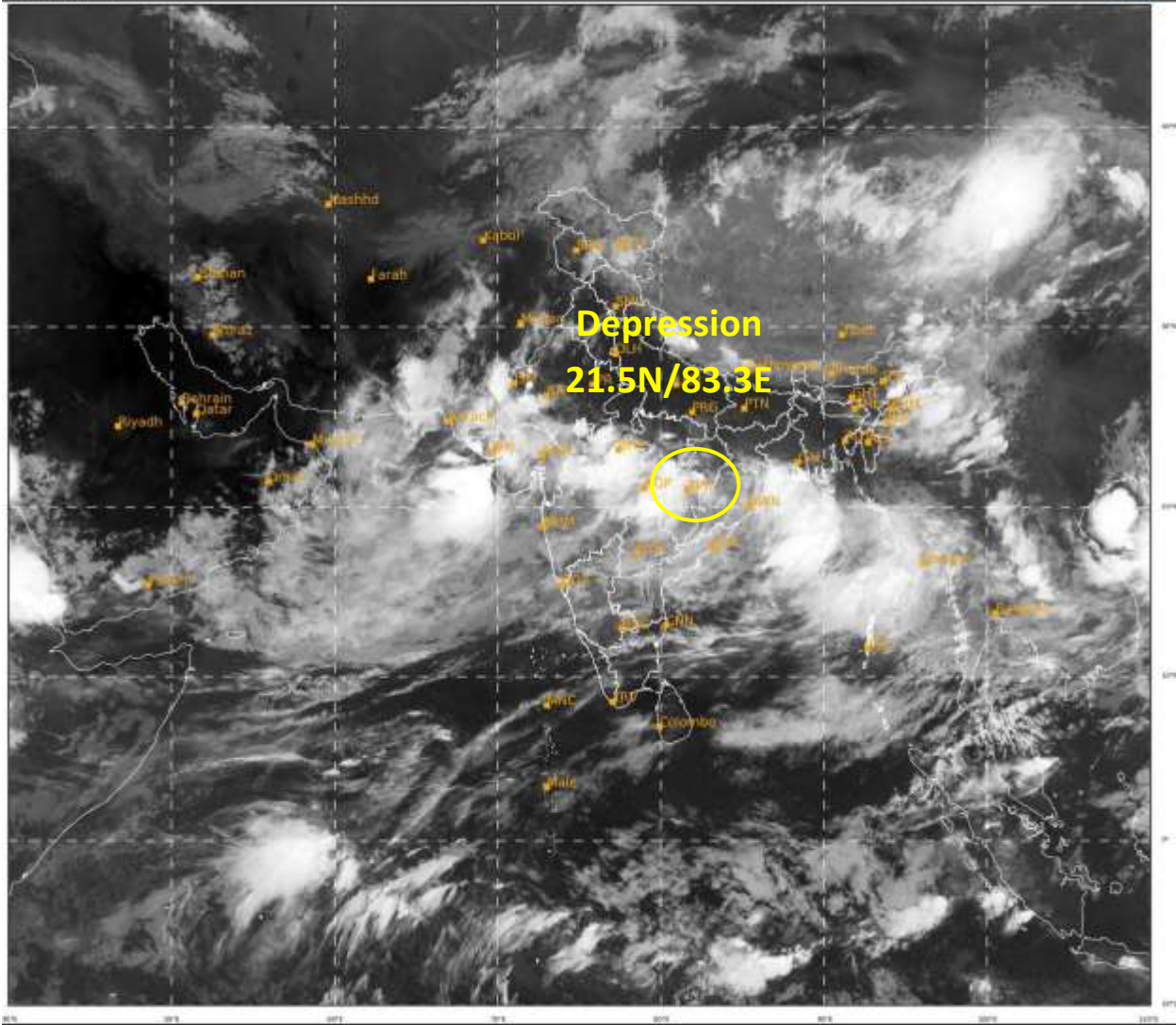
Fishermen are advised not to venture into north Bay of Bengal along & off Odisha & West Bengal coasts, central & adjoining south Bay of Bengal and along & off Andhra Pradesh, Tamil Nadu, and Comorin area & east Sri Lanka coasts and Andaman Sea during 10th to 11th August and into central & adjoining North Bay of Bengal & parts of south Bay of Bengal and Andaman Sea on 12th August.

The system is under continuous surveillance and the next message will be issued at 0830 hours IST of the 10th August, 2022.

**(Dr. Amit Bhardwaj)
Scientist C, NWP, New Delhi**

Copy to: ACWC Kolkata/ ACWC Chennai/ CWC Bhubaneswar/CWCVisakhapatnam/CWC Ahmedabad/ MO Port Blair/MC Raipur/MC Bhopal/MC Hyderabad/RMC Nagpur

LEGEND: Heavy Rainfall: 64.5 to 115.5mm, **Very Heavy Rainfall:** 115.6 to 204.4mm **Most Places:** more than 76% of total stations, **Isolated Places:** Less than 25% of total



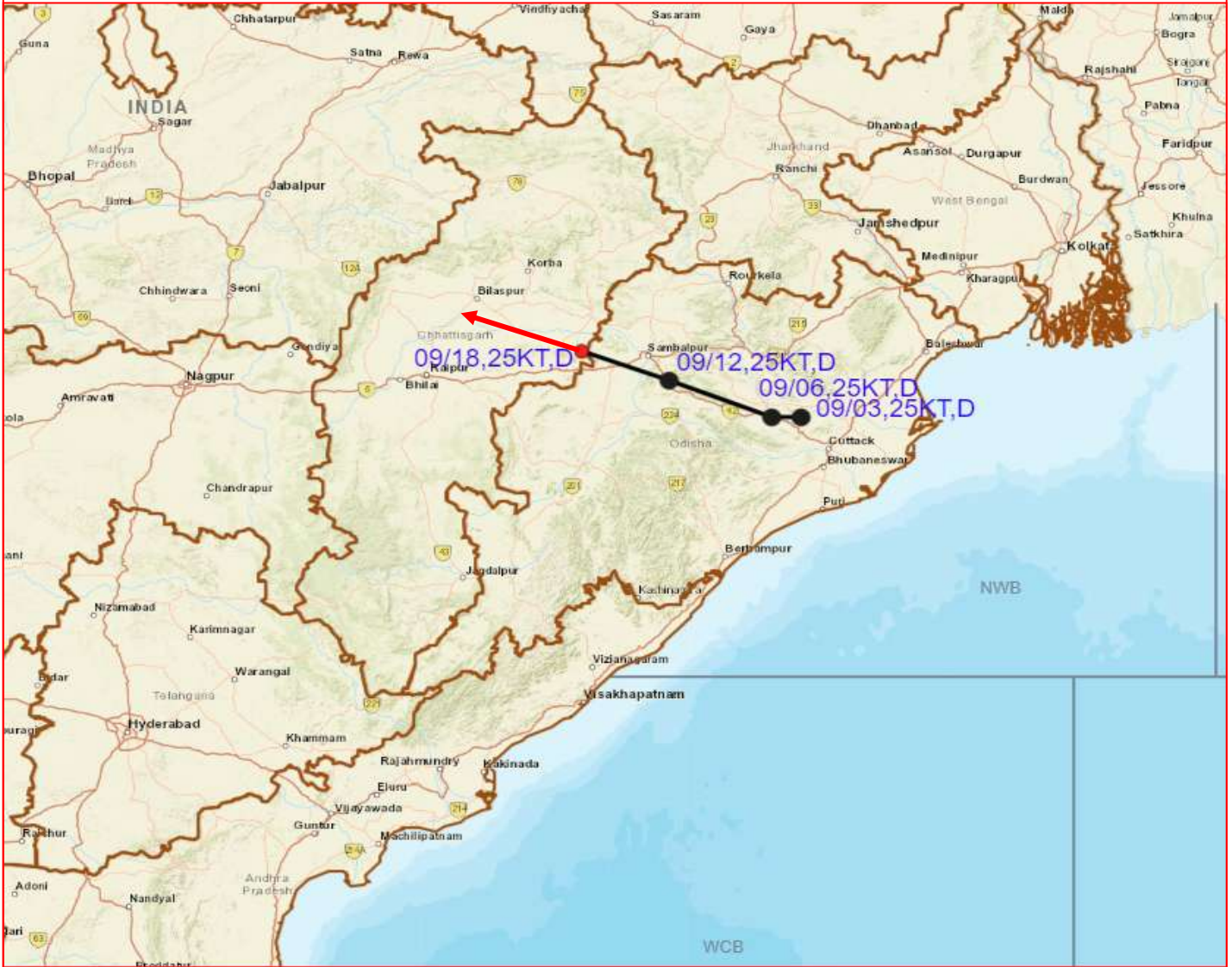
437

944

IMD, DELHI



OBSERVED AND FORECAST TRACK OF DEPRESSION OVER INTERIOR ODISHA AND ADJOINING CHHATTISGARH BASED ON 1800 UTC OF 09TH AUGUST, 2022



DATE/TIME IN UTC
IST=UTC + 0530
L: LOW PRESSURE AREA
WML: WELL MARKED LOW PRESSURE AREA
D: DEPRESSION (17-27 KT)
DD: DEEP DEPRESSION (28-33 KT)
CS: CYCLONIC STORM (34-47 KT)
SCS: SEVERE CYCLONIC STORM (48-63KT)
VSCS: VERY SEVERE CYCLONIC STORM (64-89 KT)
ESCS: EXTREMELY SEVERE CYCLONIC STORM (90-119 KT)
SuCS: SUPER CYCLONIC STORM (\geq 120 KT)

- LESS THAN 34 KT
- 34-47 KT
- \geq 48 KT
- OBSERVED TRACK
- FORECAST TRACK
- CONE OF UNCERTAINTY



Heavy Rain



Heavy Snow



Thunderstorm



Dust Storm



Strong Winds



Visibility



Cyclone



Squall/ Hail



Frost



Cold Wave

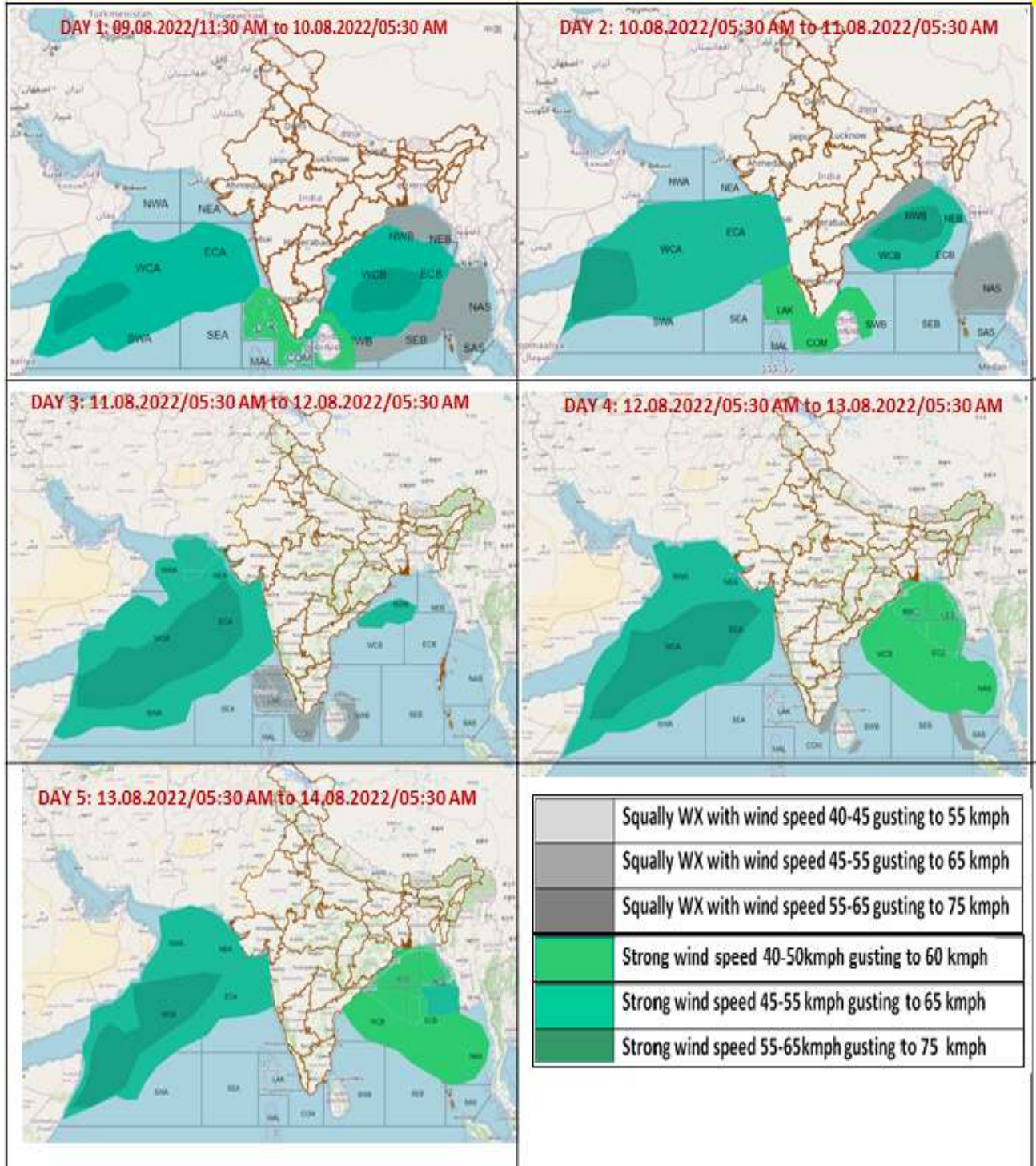


Heat Wave



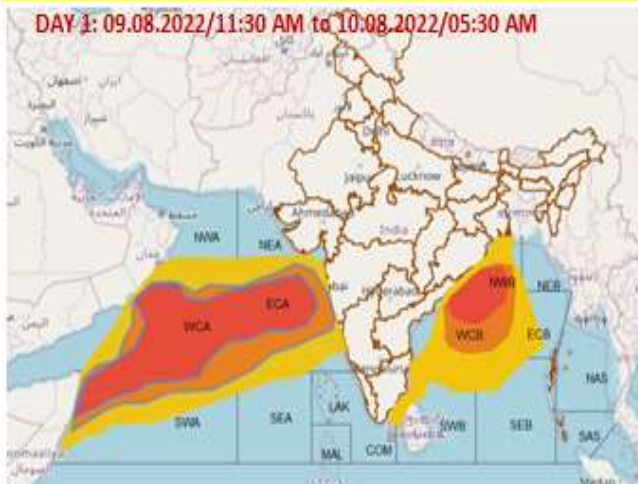
Sea State

Fishermen Warning Graphics

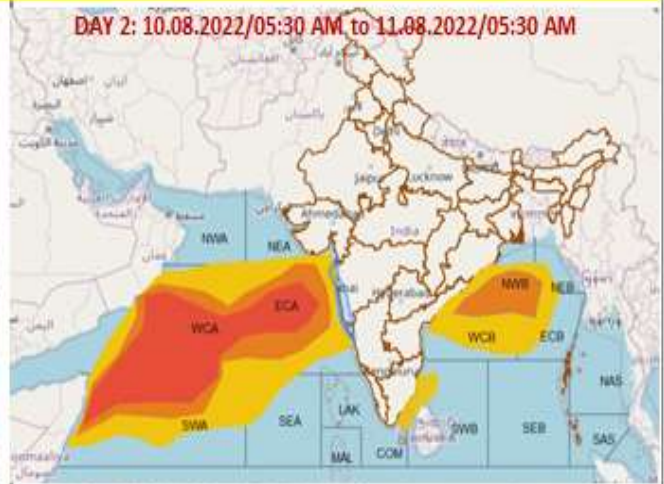


Probability of exceedance of maximum sustained winds ≥ 45 kmph

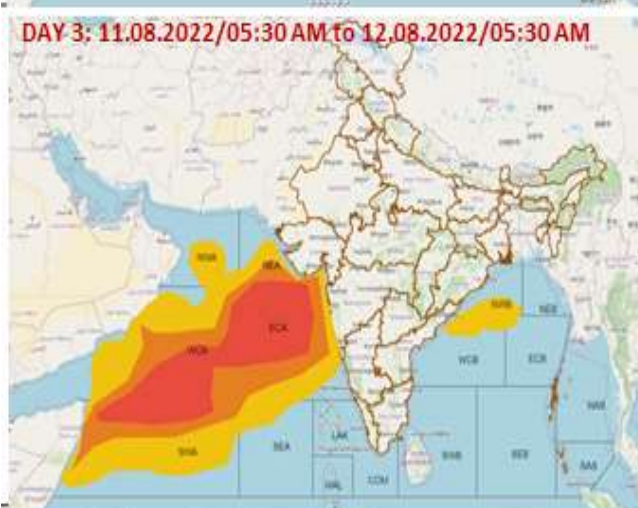
DAY 1: 09.08.2022/11:30 AM to 10.08.2022/05:30 AM



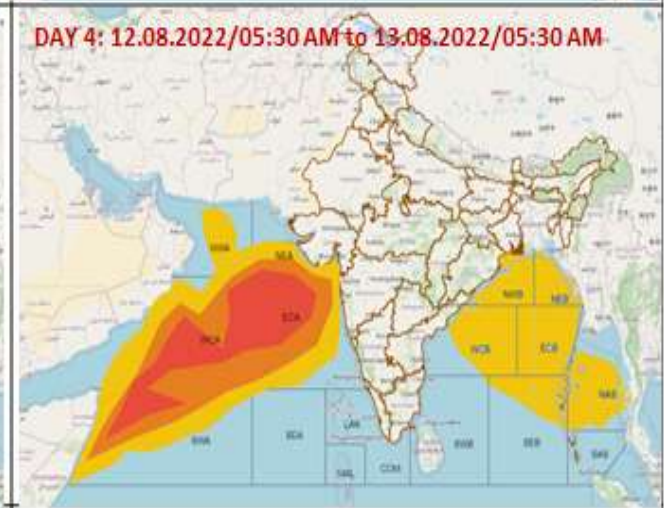
DAY 2: 10.08.2022/05:30 AM to 11.08.2022/05:30 AM



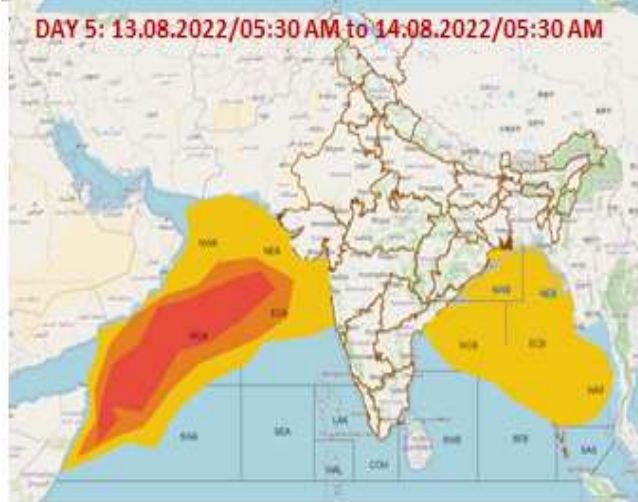
DAY 3: 11.08.2022/05:30 AM to 12.08.2022/05:30 AM



DAY 4: 12.08.2022/05:30 AM to 13.08.2022/05:30 AM



DAY 5: 13.08.2022/05:30 AM to 14.08.2022/05:30 AM



Probability of exceedance	
	Low (1-33%)
	Moderate (34-67%)
	High (68-100%)